

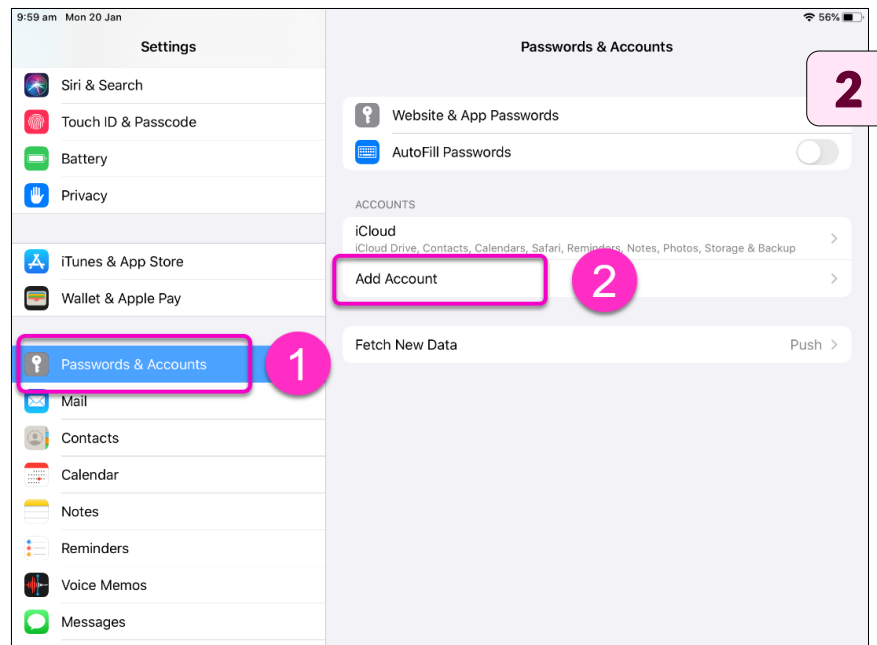


Set up **Gmail** in the iPad **Mail** app

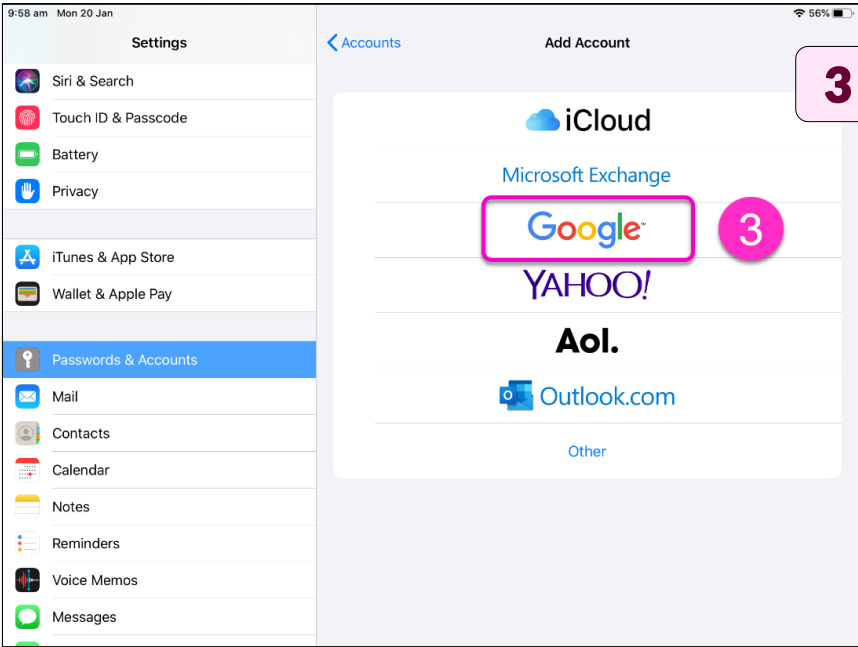


In **Settings**:

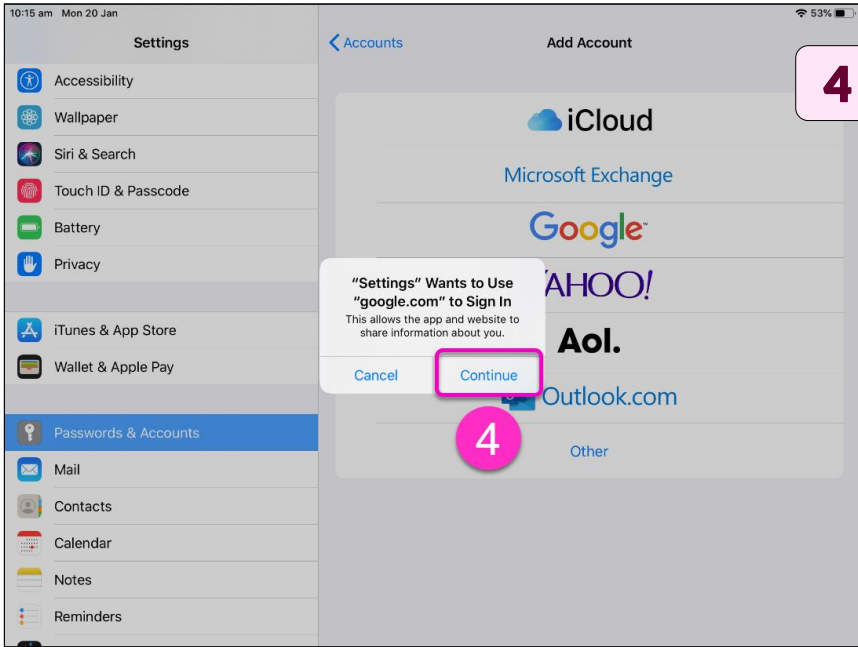
- Tap **Passwords & Accounts**
- Tap **Add Account**



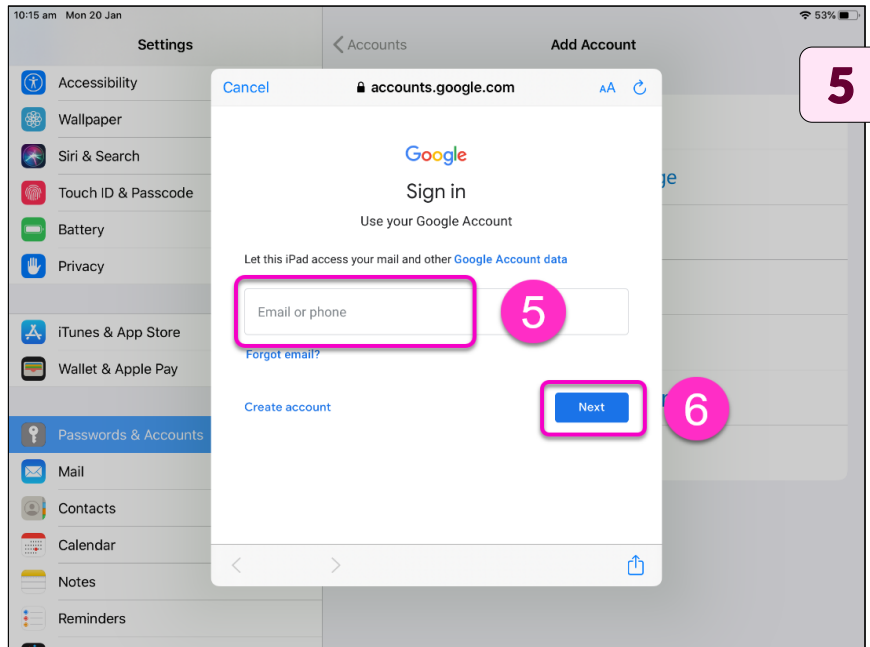
• Tap **Google**



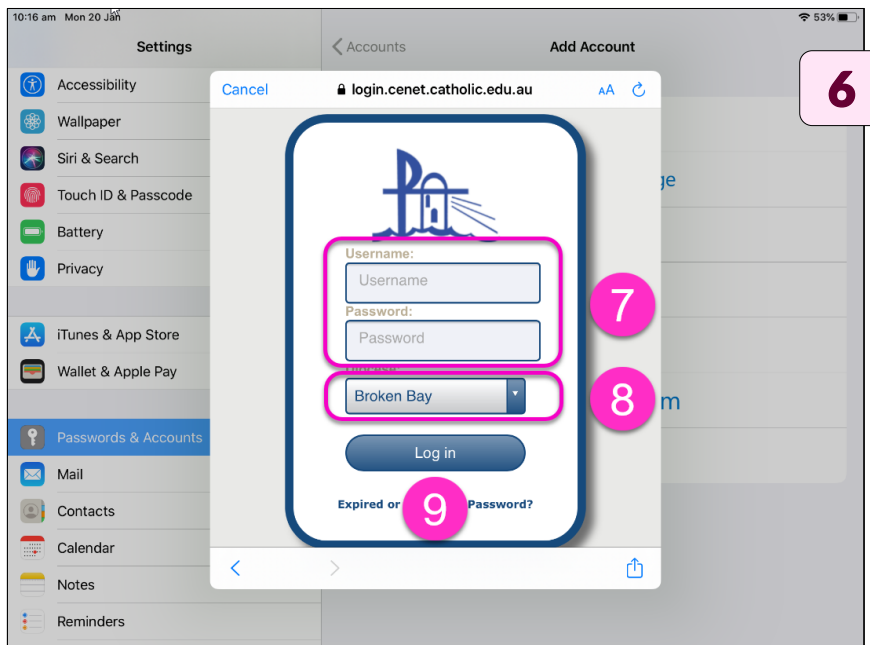
• Tap **Continue**



- Enter your **School email**
- Tap **Next**

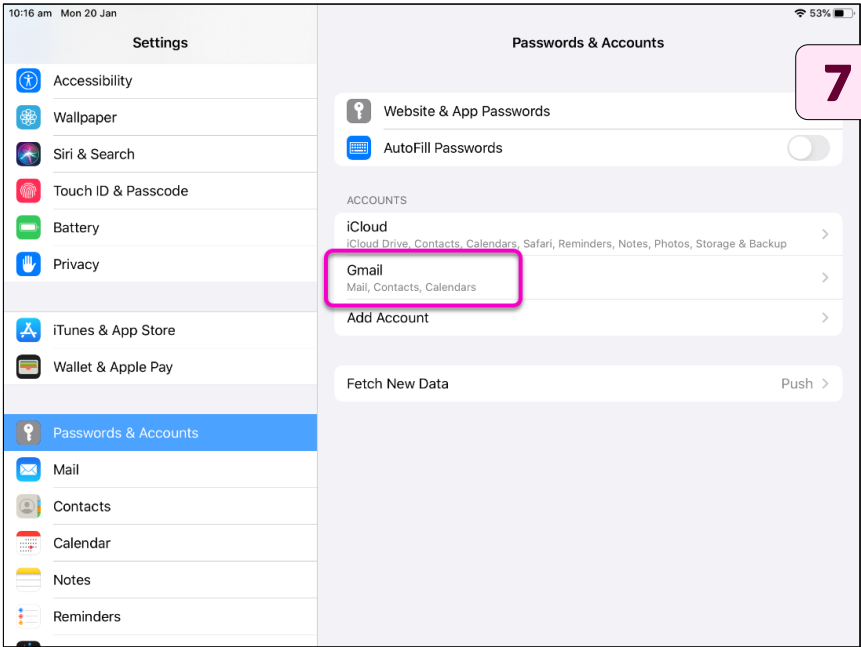


- Enter your **username**
- Enter your **password**
- Select **Broken Bay**
- Tap **Log in**



The **Gmail** account will appear under **Accounts**

- Tap **Gmail** to access the account's details



Gmail account settings

