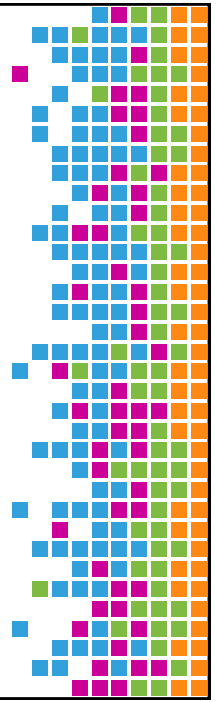
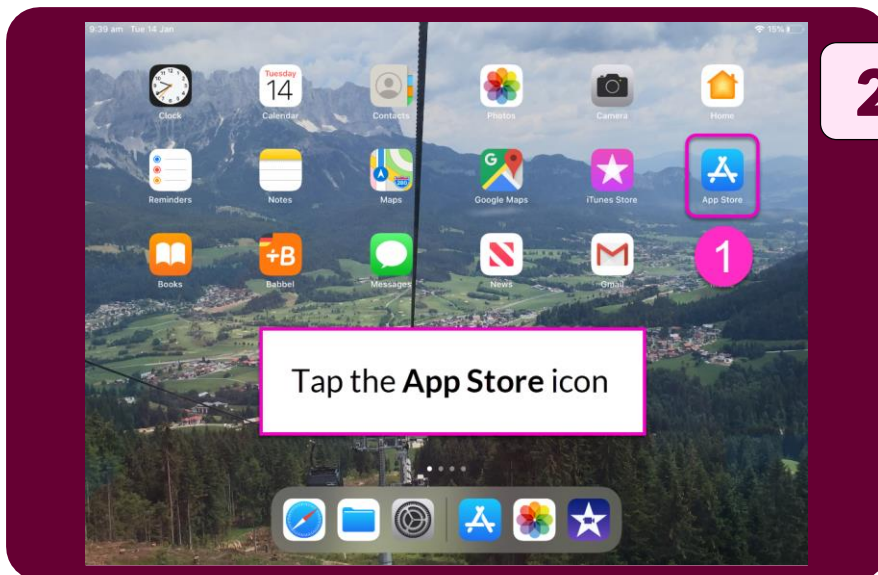
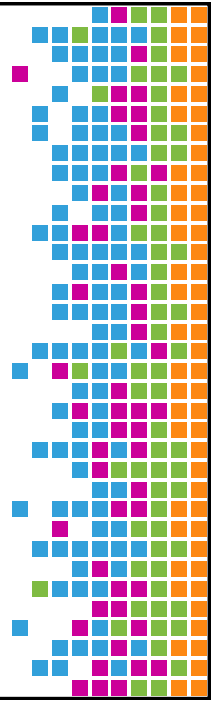
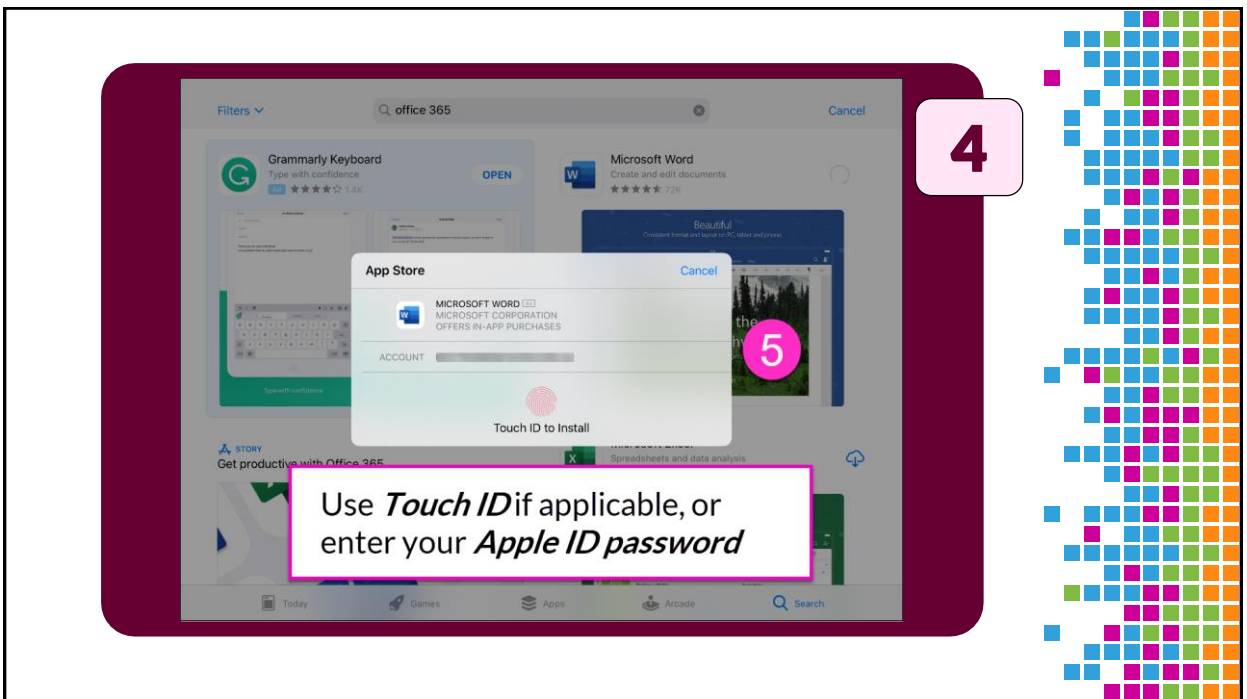
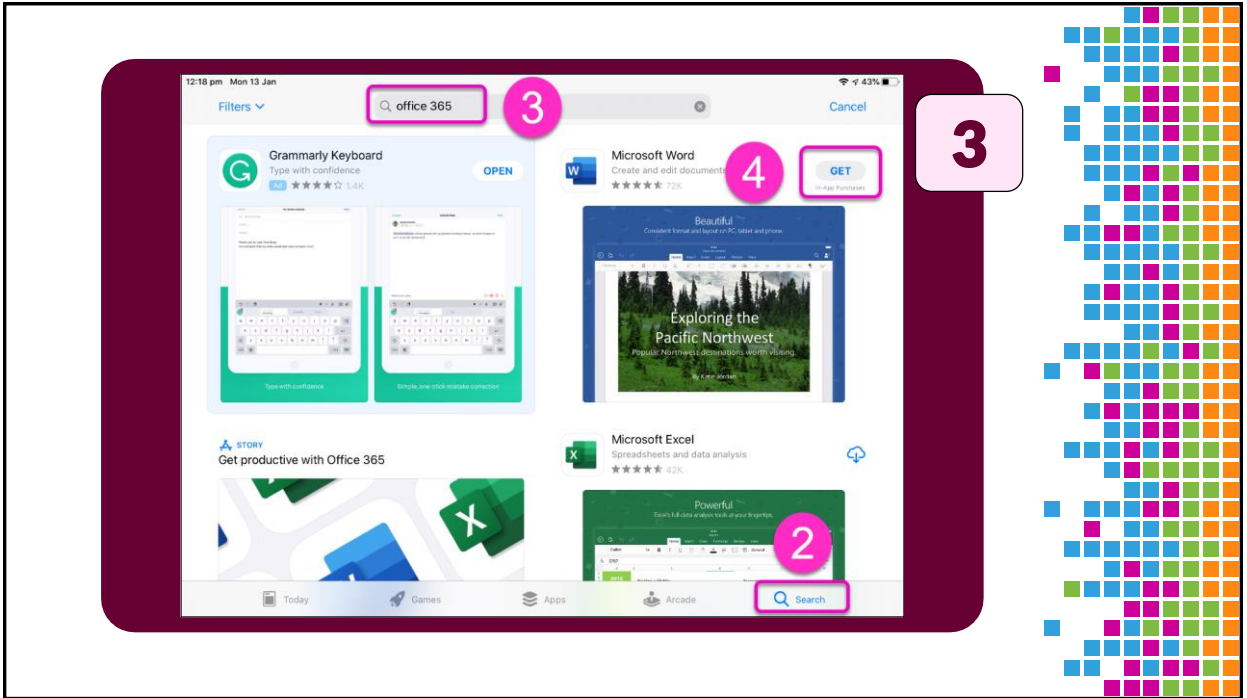




Install on an iPad





5

Microsoft Word
Create and edit documents
★★★★★ 72K

Beautiful
Consistent format and layout on PC, tablet and phone.

Exploring the Pacific Northwest
Popular Northwest destinations worth visiting.
By Katie Jordan

Word app icon on iPad

Microsoft Word
Create and edit documents
★★★★★ 72K

6 OPEN

An **Office 365** account is required to use Office apps and services.
Follow the Steps 7 to 11 to **sign in** to Office 365.

6

11:22 am Tue 14 Jan
Filters Office 365 Cancel

Microsoft OneNote
Capture Notes, Ideas and Memos
★★★★★ 47K GET

Microsoft OneDrive
File & photo cloud storage
★★★★★ 24K GET

Capture Access files Back up photos

Repeat the **previous steps** to install any other required Office 365 apps on your iPad - e.g. PowerPoint, Excel, OneNote, OneDrive.

7

Use Word on the Go

Sign Up for Free

7 Sign In

Not Now

Microsoft

Select **Sign in** to access your Office 365 account

This screenshot shows the 'Use Word on the Go' sign-in page. A pink callout box with the number 7 points to the 'Sign In' button. The page includes a 'Sign Up for Free' button, a 'Not Now' link, and the Microsoft logo.

Sign in to your Office 365 account

8

Microsoft

Sign in

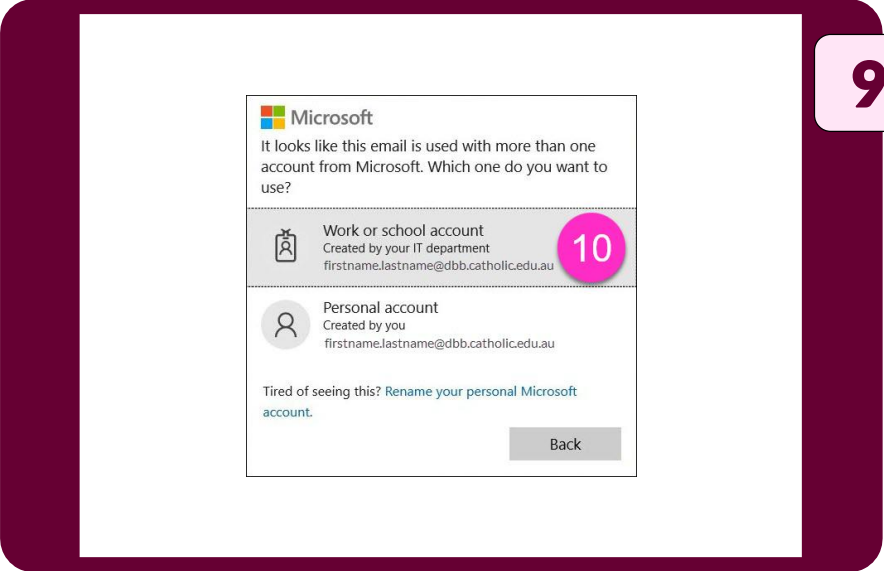
8

9

Next



Enter your *login name* @ dbb.catholic.edu.au
DO NOT use "dbbstu"

This screenshot shows the 'Sign in to your Office 365 account' page. A pink callout box with the number 8 points to the text input field containing the email address 'firstname.lastname@dbb.catholic.edu.au'. Another pink callout box with the number 9 points to the 'Next' button. A separate pink callout box provides instructions: 'Enter your login name @ dbb.catholic.edu.au DO NOT use "dbbstu"'. The page includes links for 'No account? Create one!', 'Can't access your account?', and 'Sign-in options'.



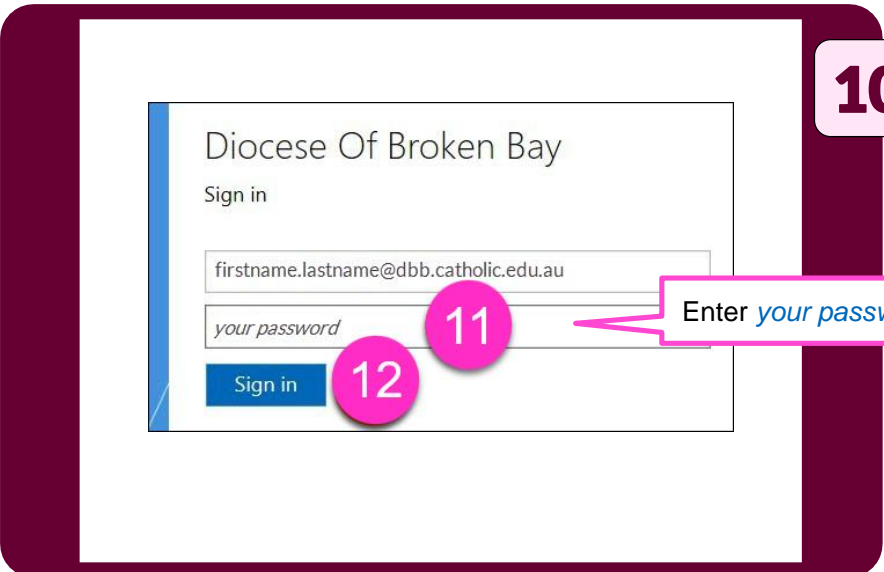
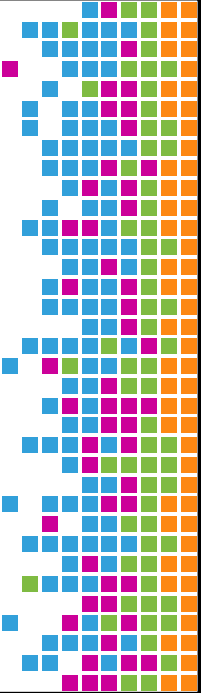
9

Microsoft
It looks like this email is used with more than one account from Microsoft. Which one do you want to use?

	Work or school account Created by your IT department firstname.lastname@dbb.catholic.edu.au	10
	Personal account Created by you firstname.lastname@dbb.catholic.edu.au	

Tired of seeing this? Rename your personal Microsoft account.

Back



10

Diocese Of Broken Bay

Sign in

firstname.lastname@dbb.catholic.edu.au

your password

Sign in

12

11

Enter *your password*

