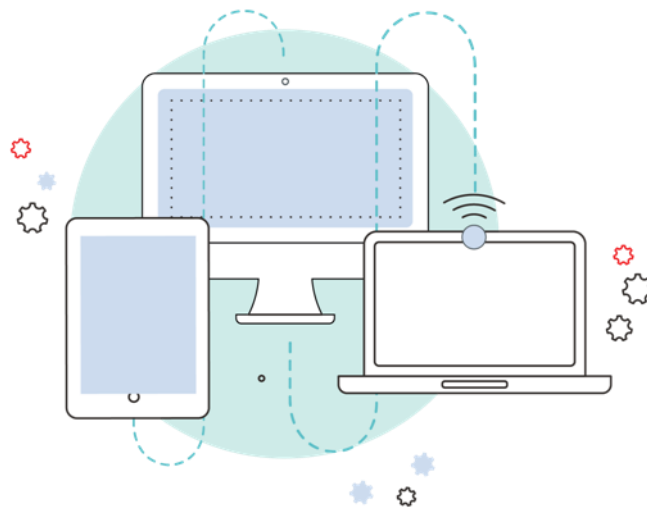


# Accessing your digital resources



A guide for  
**Mater Maria Catholic College**

**2021**

# Contents

<a href="#">Provisioned Resources</a> .....	2
<a href="#">Year 7</a> .....	3
<a href="#">Year 8</a> .....	3
<a href="#">Year 9</a> .....	3
<a href="#">Year 10</a> .....	3
<a href="#">Year 11</a> .....	3
<a href="#">Emailed Resources</a> .....	4
Year 12 .....	
<a href="#">Mathematics Standard</a> .....	5
<a href="#">PDHPE</a> .....	6
<a href="#">Studies of Religion</a> .....	7

# Welcome!

There's a lot going on at the start of the school year, so we want to make it very easy for you to get your digital resources set up.

## Provisioned Resources

Provisioned resources are products that have been set up by Champion. This saves you time by skipping the account creation and product activation process.

On the following pages we've provided instructions on what you need to do for each subject.

While each subject may use resources from different publishers, the credentials you need to enter will always be the same.

### Here are the credentials you'll need for each account:

**USERNAME** = student school email address (e.g. @dbbstu.catholic.edu.au)

**PASSWORD** = Mater1962

*NOTE: For both new accounts and existing accounts, passwords have been overwritten and are case sensitive.*

If you get stuck on any of these websites, we're here to help.

Our website has a range of step by step guides and videos at:

<https://www.champion.com.au/support-help/support-for-parents/>

**Phone:** 1300 433 982

**Email:** [championhelpdesk@champion.com.au](mailto:championhelpdesk@champion.com.au)

## Campion MyConnect

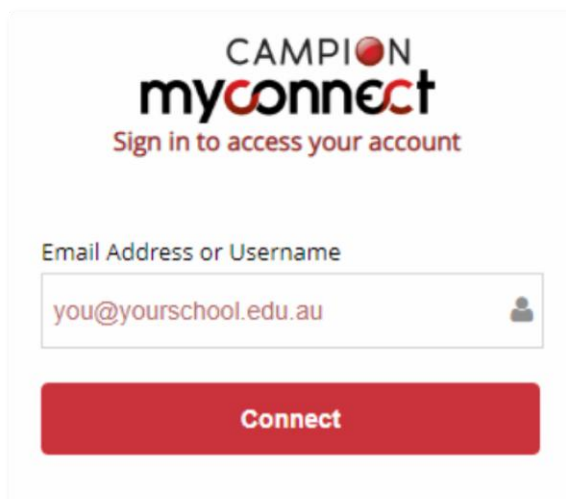
<b>Year 7</b>	English, Geography, History, Mathematics, Science, Religion
<b>Year 8</b>	Geography, History, Italian, Mathematics, Science, Religion
<b>Year 9</b>	Commerce, Food Technology, Geography, History, Information & Software Technology, Mathematics, Science, Religion, Visual Arts
<b>Year 10</b>	Commerce, Food Technology, Geography, History, Information & Software Technology, Mathematics, Science, Religion, Visual Arts
<b>Year 11</b>	Biology, Business Studies, Earth & Environmental Science, Economics, Hospitality, Legal Studies, Mathematics Advanced, Mathematics Standard, PDHPE, Physics, Religion, Textiles & Design

Getting your MyConnect app set up for the school year is easy - there are just **3 steps you will need to follow**:

1. **Download** the MyConnect app. Click [here](#) to select the appropriate MyConnect app for your device (e.g. iPad, Android, Windows, Mac).
2. **Open the app and log in** using the credentials listed on page 1

Once you have logged in to your MyConnect app, your purchased digital resources will be displayed in your MyConnect bookshelf.

3. **Tap each tile to download the content**, so you are all ready for the start of school.



The image shows the login interface for the Campion MyConnect app. At the top, the logo 'CAMPION myconnect' is displayed, with 'myconnect' in a stylized font. Below the logo, the text 'Sign in to access your account' is shown. There is a text input field labeled 'Email Address or Username' containing the placeholder text 'you@yourschool.edu.au'. To the right of the input field is a small user icon. Below the input field is a large red button labeled 'Connect'.

### Need additional support?

- Click [here](#) to view a video guide or step-by-step instructions on how to log in and start using your digital resource in MyConnect.
- Additional information and support can be found on our website [here](#).

# Emailed Resources

In addition to your provisioned resources, there may also be other digital resources that have been emailed to you and/or your parent's email address if you purchased them from the resource list.

These are called Access Codes or MyConnect eCodes.

**Open the email you received which contains the details of the product you have ordered, your unique Access Code (if an Access Code) or log in details (if a MyConnect eCode), and instructions on how to access your digital resource.**

When creating a new account, we recommend using your student school email address.

Each subject may have a different publisher website to go to. On the following pages we've provided instructions on what you need to do for each subject (this information is also provided in the email you would have received).

**If you get stuck on any of these websites, we're here to help.**

**Our website has a range of step by step guides and videos at:**

<https://www.campion.com.au/support-help/support-for-parents/>

**Phone:** 1300 433 982

**Email:** [campionhelpdesk@campion.com.au](mailto:campionhelpdesk@campion.com.au)



## Cambridge GO

Year 12

Mathematics Standard

---

Click on the Cambridge website listed in your email. For reference, this should be:  
[www.cambridge.org/go/activate](http://www.cambridge.org/go/activate).

### Step 1.

Enter the Access Code provided in your email from Campion and click **Activate code**.

### Step 2.

Log in to your existing account, or create a new account, then follow the prompts.

### Step 3.

Your new digital resource has been successfully added to your bookshelf and can be accessed from there.

## JacarandaPLUS

Year 12

PDHPE

---

Click on the Jacaranda website listed in your email. For reference, this should be:  
[www.jacplus.com.au](http://www.jacplus.com.au).

### Step 1.

If you have an existing account, enter your credentials to log in.

If you are a new user, click **Create your account** and follow the prompts.

You will then be taken to your JacarandaPLUS bookshelf.

### Step 2.

Click **Add a new title**.

Enter the Access Code provided in your email from Campion.

### Step 3.

Your new digital resource has been successfully added to your bookshelf and can be accessed from there.

## NelsonNet

Year 12

Studies of Religion

---

Click on the NelsonNet website listed in your email. For reference, this should be:  
[www.nelsonnet.com.au](http://www.nelsonnet.com.au).

### Step 1.

If you have an existing account, click **Login** and enter your credentials.

If you are a new user, click **Create an account** and follow the prompts.

You will then be taken to your NelsonNet bookshelf.

### Step 2.

In your bookshelf, find the 'Add a title to your bookshelf' field.

Enter the Access Code provided in your email from Campion.

### Step 3.

Your new digital resource has been successfully added to your bookshelf and can be accessed from there.